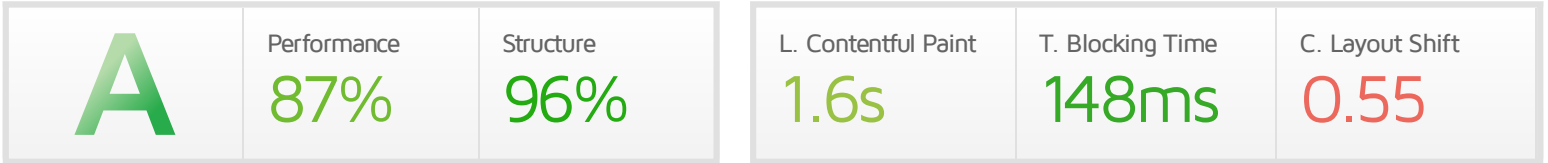




# Performance Report for: <https://barradoce.netlify.app/nova/estrela-e-pitanga>

Report generated: Mon, Aug 23, 2021 9:07 AM -0300  
 Test Server Location: 🇧🇷 São Paulo, Brazil  
 Using: 🌐 Chrome (Desktop) 90.0.4430.212, Lighthouse 7.4.0  
 Analysis options: ▶ Video



## Top Issues

IMPACT	AUDIT	
Med	Avoid large layout shifts	5 elements found
Med-Low	Serve static assets with an efficient cache policy	Potential savings of 123KB
Low	Avoid an excessive DOM size	916 elements
Low	Reduce unused JavaScript	Potential savings of 60.5KB
Low	Reduce unused CSS	Potential savings of 31.2KB

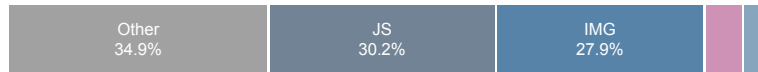
## Page Details



Total Page Size - 312KB



Total Page Requests - 43



HTML JS CSS IMG Video Font Other

### How does this affect me?

Today's web user expects a fast and seamless website experience. Delivering that fast experience can result in increased visits, conversions and overall happiness.

As if you didn't need more incentive, **Google has announced that they are using page speed in their ranking algorithm.**

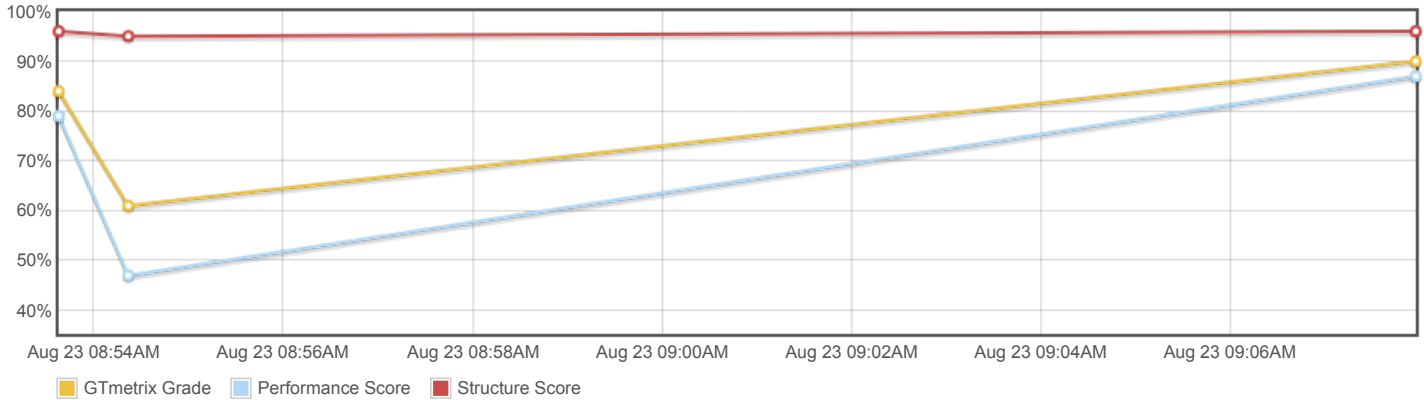
### About GTmetrix



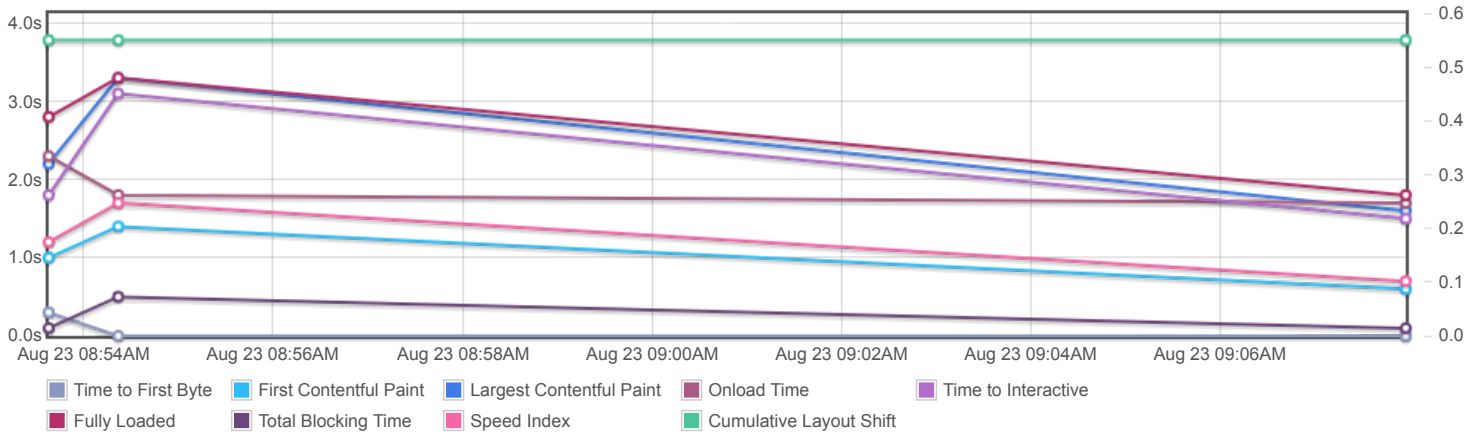
GTmetrix is developed by the good folks at Carbon60, a Canadian hosting company with over 25 years experience in web technology.

<https://carbon60.com/>

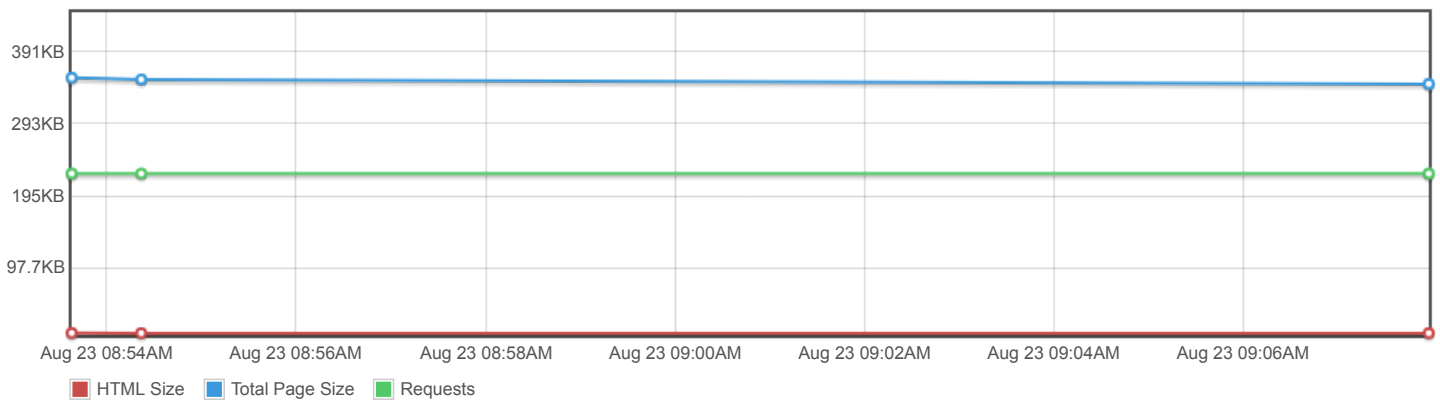
### Page scores



### Page metrics

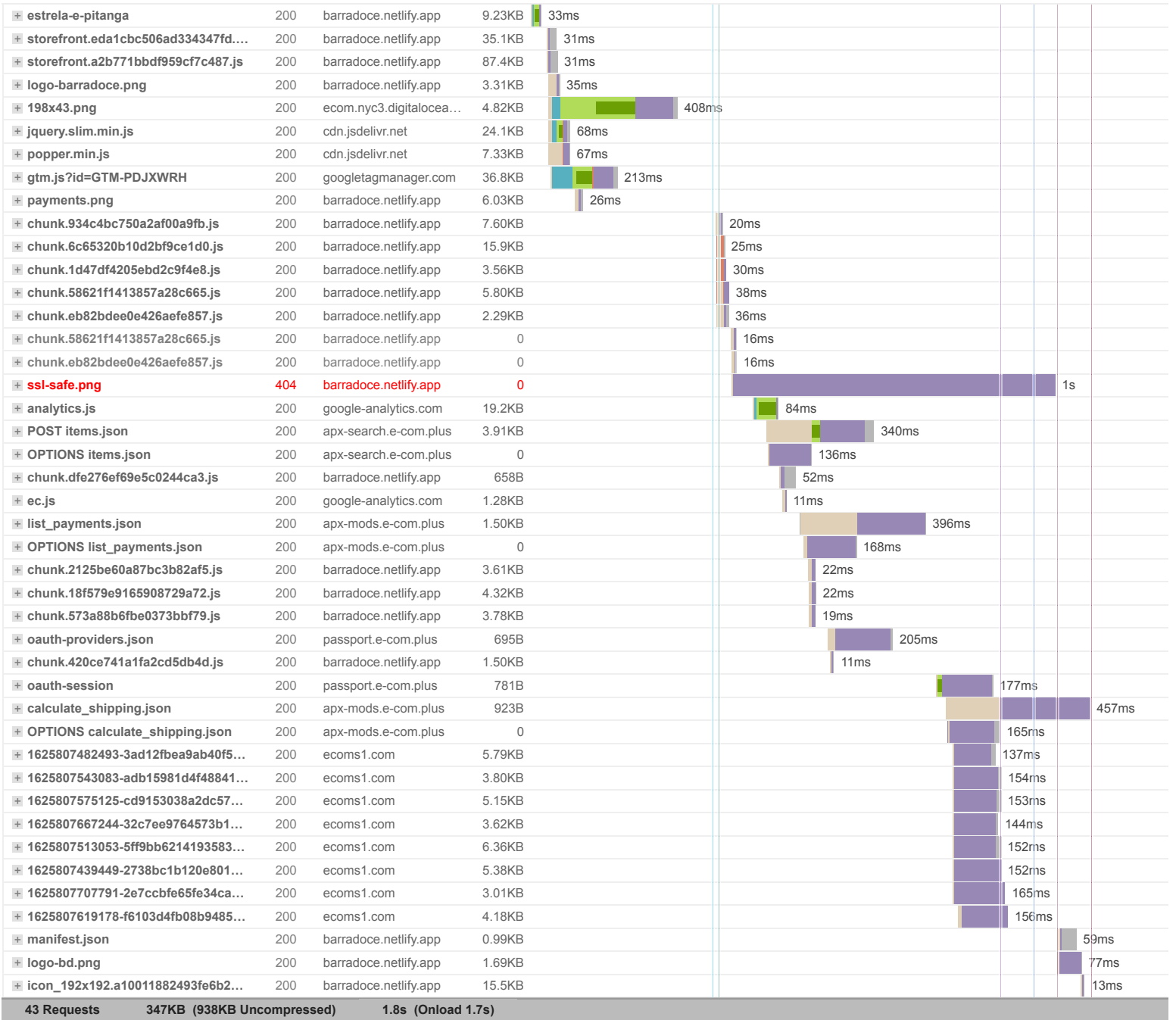


### Page sizes and request counts

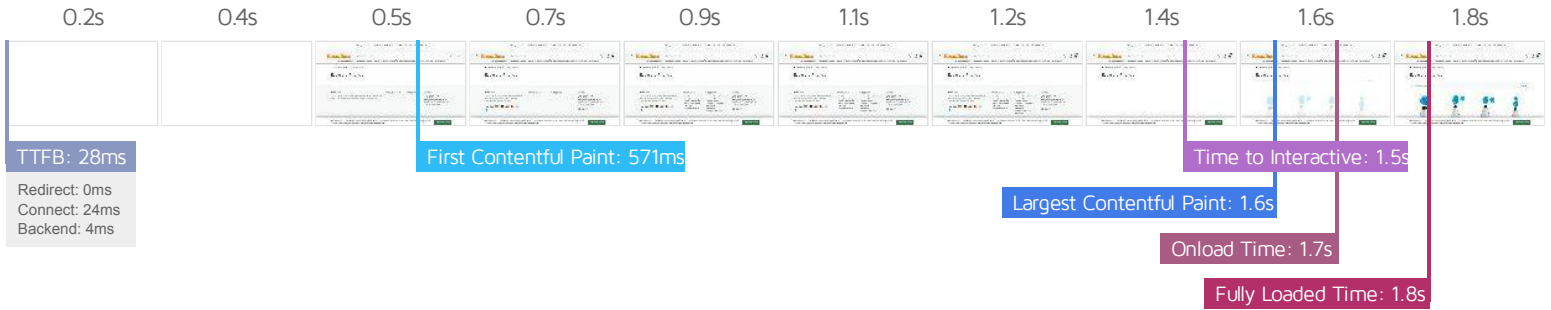


The waterfall chart displays the loading behaviour of your site in your selected browser. It can be used to discover simple issues such as 404's or more complex issues such as external resources blocking page rendering.

### Estrela e Pitanga



43 Requests    347KB (938KB Uncompressed)    1.8s (Onload 1.7s)



### Performance Metrics

<p><b>First Contentful Paint</b></p> <p>How quickly content like text or images are painted onto your page. A good user experience is 0.9s or less.</p>	<p>Good - Nothing to do here</p> <p><b>571ms</b></p>	<p><b>Time to Interactive</b></p> <p>How long it takes for your page to become fully interactive. A good user experience is 2.5s or less.</p>	<p>Good - Nothing to do here</p> <p><b>1.5s</b></p>
<p><b>Speed Index</b></p> <p>How quickly the contents of your page are visibly populated. A good user experience is 1.3s or less.</p>	<p>Good - Nothing to do here</p> <p><b>739ms</b></p>	<p><b>Total Blocking Time</b></p> <p>How much time is blocked by scripts during your page loading process. A good user experience is 150ms or less.</p>	<p>Good - Nothing to do here</p> <p><b>148ms</b></p>
<p><b>Largest Contentful Paint</b></p> <p>How long it takes for the largest element of content (e.g. a hero image) to be painted on your page. A good user experience is 1.2s or less.</p>	<p>OK, but consider improvement</p> <p><b>1.6s</b></p>	<p><b>Cumulative Layout Shift</b></p> <p>How much your page's layout shifts as it loads. A good user experience is a score of 0.1 or less.</p>	<p>Much more than recommended</p> <p><b>0.55</b></p>

### Browser Timings

Redirect	0ms	Connect	24ms	Backend	4ms
TTFB	28ms	First Paint	571ms	DOM Int.	590ms
DOM Loaded	590ms	Onload	1.7s	Fully Loaded	1.8s

**IMPACT** **AUDIT**

**Med** **Avoid large layout shifts** 5 elements found

These DOM elements contribute most to the CLS of the page.

[Learn how to improve this](#)

ELEMENT	CLS CONTRIBUTION
Contatos (11) 3578 0449 barradoce@barradoce.com.br Loja Física - Av. dos Eucali... <footer class="footer py-3 py-lg-4 py-xl-5">	0.49
© BarraDoce / Loja Física - Av. dos Eucaliptos, 305 (São Paulo/SP) / 40.066.704... <div class="footer__credits">	0.02
Institucional Contato Condições de entrega Formas de pagamento Política de ... <div class="col-12 col-sm-6 col-lg col-xl-auto px-xl-4">	0.02
<div class="mt-4 mb-3">	0.01
Categorias Formas de Bolo e Panificação Formas de Chocolate Bicos de Confeit... <div class="col-12 col-sm-6 col-lg col-xl-auto px-xl-4">	0.01

**Med-Low** **Serve static assets with an efficient cache policy** Potential savings of 123KB

A long cache lifetime can speed up repeat visits to your page.

[Learn how to improve this](#)

URL	CACHE TTL	TRANSFER SIZE
<a href="https://ecom.nyc3.digitaloceanspaces.com/brand/plus/198x43.png">https://ecom.nyc3.digitaloceanspaces.com/brand/plus/198x43.png</a>	none	4.82KB
<a href="https://barradoce.netlify.app/storefront.a2b771bbdf959cf7c487.js">https://barradoce.netlify.app/storefront.a2b771bbdf959cf7c487.js</a>	60 minutes	87.6KB
<a href="https://barradoce.netlify.app/storefront.eda1cbc506ad334347fd.css">https://barradoce.netlify.app/storefront.eda1cbc506ad334347fd.css</a>	60 minutes	35.2KB
<a href="https://www.google-analytics.com/plugins/ua/ec.js">https://www.google-analytics.com/plugins/ua/ec.js</a>	60 minutes	1.42KB
<a href="https://www.google-analytics.com/analytics.js">https://www.google-analytics.com/analytics.js</a>	2 hours	19.6KB
<a href="https://barradoce.netlify.app/assets/payments.png">https://barradoce.netlify.app/assets/payments.png</a>	24 hours	6.15KB
<a href="https://barradoce.netlify.app/chunk.18f579e9165908729a72.js">https://barradoce.netlify.app/chunk.18f579e9165908729a72.js</a>	7 days	4.42KB
<a href="https://barradoce.netlify.app/chunk.573a88b6fbe0373bbf79.js">https://barradoce.netlify.app/chunk.573a88b6fbe0373bbf79.js</a>	7 days	3.91KB
<a href="https://barradoce.netlify.app/chunk.2125be60a87bc3b82af5.js">https://barradoce.netlify.app/chunk.2125be60a87bc3b82af5.js</a>	7 days	3.71KB
<a href="https://barradoce.netlify.app/chunk.420ce741a1fa2cd5db4d.js">https://barradoce.netlify.app/chunk.420ce741a1fa2cd5db4d.js</a>	7 days	1.60KB
<a href="https://barradoce.netlify.app/chunk.dfe276ef69e5c0244ca3.js">https://barradoce.netlify.app/chunk.dfe276ef69e5c0244ca3.js</a>	7 days	761B
<a href="https://barradoce.netlify.app/chunk.58621f1413857a28c665.js">https://barradoce.netlify.app/chunk.58621f1413857a28c665.js</a>	7 days	0B
<a href="https://barradoce.netlify.app/chunk.eb82bdee0e426aefe857.js">https://barradoce.netlify.app/chunk.eb82bdee0e426aefe857.js</a>	7 days	0B

**Low** **Avoid an excessive DOM size** 916 elements

A large DOM will increase memory usage, cause longer style calculations, and produce costly layout reflows.

[Learn how to improve this](#)

STATISTIC	ELEMENT	VALUE
Total DOM Elements		916
Maximum DOM Depth	source <source srcset="https://ecomsl.com/3967/imgs/normal/@v3/1625807439449-2738bc1b120e801c2bd5..." type="image/webp">	19
Maximum Child Elements	Bico de Confeitar Pitanga nº 8B - Wilton R\$ 13,50 Adicionar Bico de Confeitar ... <div class="row">	24

**Low** **Reduce unused JavaScript** Potential savings of 60.5KB

Reduce unused JavaScript and defer loading scripts until they are required to decrease bytes consumed by network activity.

[Learn how to improve this](#)

URL	TRANSFER SIZE	POTENTIAL SAVINGS
<a href="https://barradoce.netlify.app/storefront.a2b771bbdf959cf7c487.js">https://barradoce.netlify.app/storefront.a2b771bbdf959cf7c487.js</a> (unmapped)	87.6KB	39.5KB
<a href="https://www.googletagmanager.com/gtm.js?id=GTM-PDJXWRH">https://www.googletagmanager.com/gtm.js?id=GTM-PDJXWRH</a>	89732	40403
	37.3KB	21.1KB

**Low** **Reduce unused CSS** Potential savings of 31.2KB

Reduce unused rules from stylesheets and defer CSS not used for above-the-fold content to decrease bytes consumed by network activity.

[Learn how to improve this](#)

URL	TRANSFER SIZE	POTENTIAL SAVINGS
• <a href="https://barradoce.netlify.app/storefront.eda1cbc506ad334347fd.css">https://barradoce.netlify.app/storefront.eda1cbc506ad334347fd.css</a>	35.2KB	31.2KB

**Low** **Avoid long main-thread tasks** 4 long tasks found

Lists the longest tasks on the main thread, useful for identifying worst contributors to input delay.

[Learn how to improve this](#)

URL	START TIME	DURATION
• <a href="https://barradoce.netlify.app/nova/estrela-e-pitanga">https://barradoce.netlify.app/nova/estrela-e-pitanga</a>	191ms	296ms
• <a href="https://barradoce.netlify.app/chunk.eb82bdee0e426aefe857.js">https://barradoce.netlify.app/chunk.eb82bdee0e426aefe857.js</a>	1.2s	174ms
• <a href="https://cdn.jsdelivr.net/npm/popper.js@1.16.1/dist/umd/popper.min.js">https://cdn.jsdelivr.net/npm/popper.js@1.16.1/dist/umd/popper.min.js</a>	536ms	119ms
• <a href="https://barradoce.netlify.app/storefront.a2b771bbdf959cf7c487.js">https://barradoce.netlify.app/storefront.a2b771bbdf959cf7c487.js</a>	1.5s	73ms

**Low** **Defer offscreen images** Potential savings of 10.4KB

Consider lazy-loading offscreen and hidden images after all critical resources have finished loading to lower time to interactive.

[Learn how to improve this](#)

URL	RESOURCE SIZE	POTENTIAL SAVINGS
-----	---------------	-------------------

<a href="https://barradoce.netlify.app/assets/payments.png">https://barradoce.netlify.app/assets/payments.png</a>	6.03KB	6.03KB
<a href="https://ecom.nyc3.digitaloceanspaces.com/brand/plus/198x43.png">https://ecom.nyc3.digitaloceanspaces.com/brand/plus/198x43.png</a>	4.36KB	4.36KB

**Low** **Avoid enormous network payloads** Total size was 312KB

Large network payloads cost users real money and are highly correlated with long load times.

[Learn how to improve this](#)

URL	TRANSFER SIZE
<a href="https://barradoce.netlify.app/storefront.a2b771bbdf959cf7c487.js">https://barradoce.netlify.app/storefront.a2b771bbdf959cf7c487.js</a>	87.6KB
<a href="https://www.googletagmanager.com/gtm.js?id=GTM-PDJXWRH">https://www.googletagmanager.com/gtm.js?id=GTM-PDJXWRH</a>	37.3KB
<a href="https://barradoce.netlify.app/storefront.eda1cbc506ad334347fd.css">https://barradoce.netlify.app/storefront.eda1cbc506ad334347fd.css</a>	35.2KB
<a href="https://cdn.jsdelivr.net/npm/jquery@3.5.1/dist/jquery.slim.min.js">https://cdn.jsdelivr.net/npm/jquery@3.5.1/dist/jquery.slim.min.js</a>	24.5KB
<a href="https://www.google-analytics.com/analytics.js">https://www.google-analytics.com/analytics.js</a>	19.6KB
<a href="https://barradoce.netlify.app/chunk.6c65320b10d2bf9ce1d0.js">https://barradoce.netlify.app/chunk.6c65320b10d2bf9ce1d0.js</a>	16.0KB
<a href="https://barradoce.netlify.app/icon_192x192.a10011882493fe6b2c1465590b01fdd1.png">https://barradoce.netlify.app/icon_192x192.a10011882493fe6b2c1465590b01fdd1.png</a>	15.6KB
<a href="https://barradoce.netlify.app/nova/estrela-e-pitanga">https://barradoce.netlify.app/nova/estrela-e-pitanga</a>	9.47KB
<a href="https://barradoce.netlify.app/chunk.934c4bc750a2af00a9fb.js">https://barradoce.netlify.app/chunk.934c4bc750a2af00a9fb.js</a>	7.72KB
<a href="https://cdn.jsdelivr.net/npm/popper.js@1.16.1/dist/umd/popper.min.js">https://cdn.jsdelivr.net/npm/popper.js@1.16.1/dist/umd/popper.min.js</a>	7.43KB

**Low** **Reduce JavaScript execution time** 340ms spent executing JavaScript

Consider reducing the time spent parsing, compiling, and executing JS. You may find delivering smaller JS payloads helps with this.

[Learn how to improve this](#)

URL	TOTAL CPU TIME	SCRIPT EVALUATION	SCRIPT PARSE
<a href="https://barradoce.netlify.app/nova/estrela-e-pitanga">https://barradoce.netlify.app/nova/estrela-e-pitanga</a>	516ms	23ms	2ms
<a href="https://barradoce.netlify.app/storefront.a2b771bbdf959cf7c487.js">https://barradoce.netlify.app/storefront.a2b771bbdf959cf7c487.js</a>	234ms	128ms	4ms
<a href="https://barradoce.netlify.app/chunk.eb82bdee0e426aefe857.js">https://barradoce.netlify.app/chunk.eb82bdee0e426aefe857.js</a>	217ms	166ms	0ms
Unattributable	109ms	12ms	0ms

**Low** **Reduce initial server response time** Root document took 4ms

Keep the server response time for the main document short because all other requests depend on it.

[Learn how to improve this](#)

URL	TIME SPENT
<a href="https://barradoce.netlify.app/nova/estrela-e-pitanga">https://barradoce.netlify.app/nova/estrela-e-pitanga</a>	4ms

**Low** **Avoid serving legacy JavaScript to modern browsers** Potential savings of 110B

Polyfills and transforms enable legacy browsers to use new JavaScript features. However, many aren't necessary for modern browsers. For your bundled JavaScript, adopt a modern script deployment strategy using module/nomodule feature detection to reduce the amount of code shipped to modern browsers, while retaining support for legacy browsers.

[Learn how to improve this](#)

URL	POTENTIAL SAVINGS
<a href="https://cdn.jsdelivr.net/npm/popper.js@1.16.1/dist/umd/popper.min.js">https://cdn.jsdelivr.net/npm/popper.js@1.16.1/dist/umd/popper.min.js</a> Line:3 Column:12570	60B
<a href="https://barradoce.netlify.app/storefront.a2b771bbdf959cf7c487.js">https://barradoce.netlify.app/storefront.a2b771bbdf959cf7c487.js</a>	50B

Line:1 Column:250235

**Low** **Avoid non-composited animations** 2 animated elements found

Animations which are not composited can be janky and increase CLS.

[Learn how to improve this](#)

ELEMENT

Contato Condições de entrega Formas de pagamento Política de privacidade S...

```
<div class="collapse show" id="footer-pages" style="">
```

Unsupported CSS Property: height

Formas de Bolo e Panificação Formas de Chocolate Bicos de Confeitar Cortado...

```
<div class="collapse show" id="footer-categories" style="">
```

Unsupported CSS Property: height

**Low** **Avoid chaining critical requests** 2 chains found

The Critical Request Chains below show you what resources are loaded with a high priority. Consider reducing the length of chains, reducing the download size of resources, or deferring the download of unnecessary resources to improve page load.

[Learn how to improve this](#)

Maximum critical path latency: **122ms**

INITIAL NAVIGATION



**N/A** **Largest Contentful Paint element** 1 element found

This is the largest contentful element painted within the viewport.

ELEMENT

Bico de Confeitar Pitanga nº 8B - Wilton (normal)

```
<img alt="Bico de Confeitar Pitanga nº 8B - Wilton (normal)" style="">
```

**N/A** **Minimize main-thread work** Main-thread busy for 1.3s

Consider reducing the time spent parsing, compiling and executing JS. You may find delivering smaller JS payloads helps with this.

[Learn how to improve this](#)

CATEGORY	TIME SPENT
Script Evaluation	489ms
Style & Layout	425ms
Other	177ms



Rendering	106ms
Parse HTML & CSS	31ms
Garbage Collection	23ms
Script Parsing & Compilation	18ms

N/A

**Reduce the impact of third-party code**

Total size was 90.2KB

Third-party code can significantly impact load performance. Limit the number of redundant third-party providers and try to load third-party code after your page has primarily finished loading.

[Learn how to improve this](#)

THIRD-PARTY

TRANSFER SIZE

**GOOGLE TAG MANAGER**

37.3KB

- <https://www.googletagmanager.com/gtm.js?id=GTM-PDJXWRH>

37.3KB

**JSDELIVR CDN**

31.9KB

- <https://cdn.jsdelivr.net/npm/jquery@3.5.1/dist/jquery.slim.min.js>
- <https://cdn.jsdelivr.net/npm/popper.js@1.16.1/dist/umd/popper.min.js>

24.5KB

7.43KB

**GOOGLE ANALYTICS**

21.0KB

- <https://www.google-analytics.com/analytics.js>

19.6KB

N/A

**User Timing marks and measures**

No user timings and/or marks found.

[Learn more](#)