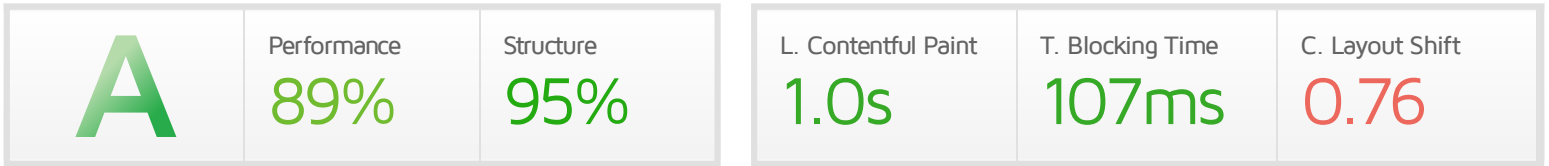




# Performance Report for: <https://barradoce.netlify.app/nova/estrela-e-pitanga>

Report generated: Mon, Aug 23, 2021 8:56 AM -0300  
 Test Server Location: 🇧🇷 São Paulo, Brazil  
 Using: 🌐 Chrome (Desktop) 90.0.4430.212, Lighthouse 7.4.0  
 Connection: LTE Mobile (15/10 Mbps, 100ms)  
 Analysis options: 📱 iPhone X/XS/11/12/12 mini/12 Pro ▶️ Video



## Top Issues

IMPACT	AUDIT	
Med	Avoid large layout shifts	5 elements found
Med-Low	Serve static assets with an efficient cache policy	Potential savings of 122KB
Med-Low	Reduce unused JavaScript	Potential savings of 61.3KB
Low	Avoid an excessive DOM size	892 elements
Low	Reduce unused CSS	Potential savings of 31.8KB

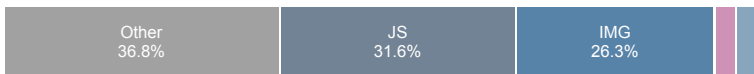
## Page Details



Total Page Size - 308KB



Total Page Requests - 38



■ HTML 
 ■ JS 
 ■ CSS 
 ■ IMG 
 ■ Video 
 ■ Font 
 ■ Other

### How does this affect me?

Today's web user expects a fast and seamless website experience. Delivering that fast experience can result in increased visits, conversions and overall happiness.

As if you didn't need more incentive, **Google has announced that they are using page speed in their ranking algorithm.**

### About GTmetrix

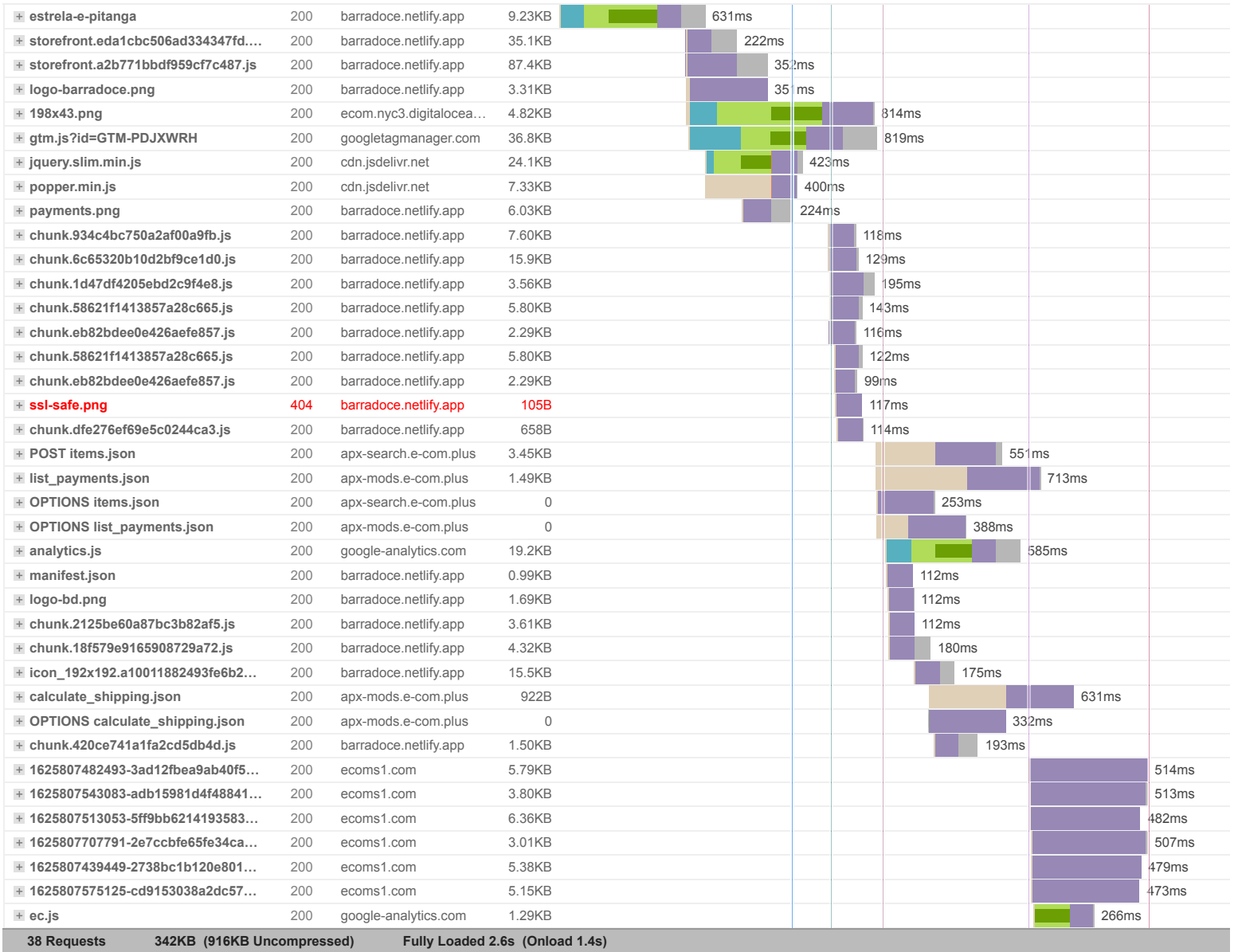
**CARBON60**  
THE MANAGED CLOUD COMPANY

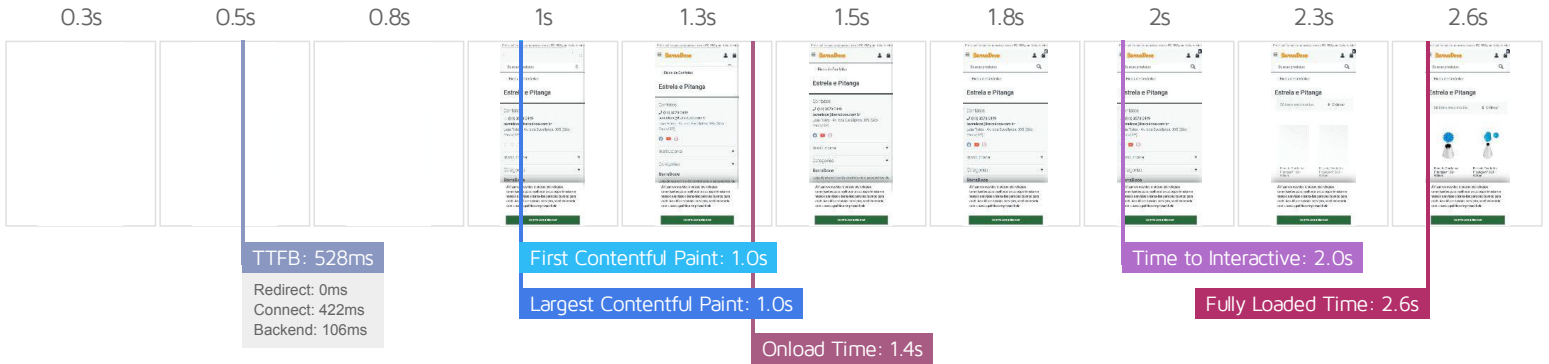
GTmetrix is developed by the good folks at **Carbon60**, a Canadian hosting company with over 25 years experience in web technology.

<https://carbon60.com/>

The waterfall chart displays the loading behaviour of your site in your selected browser. It can be used to discover simple issues such as 404's or more complex issues such as external resources blocking page rendering.

### Estrela e Pitanga





### Performance Metrics

<p><b>First Contentful Paint</b></p> <p>How quickly content like text or images are painted onto your page. A good user experience is 0.9s or less.</p>	<p>OK, but consider improvement</p> <p><b>1.0s</b></p>	<p><b>Time to Interactive</b></p> <p>How long it takes for your page to become fully interactive. A good user experience is 2.5s or less.</p>	<p>Good - Nothing to do here</p> <p><b>2.0s</b></p>
<p><b>Speed Index</b></p> <p>How quickly the contents of your page are visibly populated. A good user experience is 1.3s or less.</p>	<p>Good - Nothing to do here</p> <p><b>1.2s</b></p>	<p><b>Total Blocking Time</b></p> <p>How much time is blocked by scripts during your page loading process. A good user experience is 150ms or less.</p>	<p>Good - Nothing to do here</p> <p><b>107ms</b></p>
<p><b>Largest Contentful Paint</b></p> <p>How long it takes for the largest element of content (e.g. a hero image) to be painted on your page. A good user experience is 1.2s or less.</p>	<p>Good - Nothing to do here</p> <p><b>1.0s</b></p>	<p><b>Cumulative Layout Shift</b></p> <p>How much your page's layout shifts as it loads. A good user experience is a score of 0.1 or less.</p>	<p>Much more than recommended</p> <p><b>0.76</b></p>

### Browser Timings

Redirect	0ms	Connect	422ms	Backend	106ms
TTFB	528ms	First Paint	1.0s	DOM Int.	1.2s
DOM Loaded	1.2s	Onload	1.4s	Fully Loaded	2.6s

**IMPACT** **AUDIT**

**Med** **Avoid large layout shifts** 5 elements found

These DOM elements contribute most to the CLS of the page.

[Learn how to improve this](#)

ELEMENT	CLS CONTRIBUTION
Contatos (11) 3578 0449 barradoce@barradoce.com.br Loja Física - Av. dos Eucali... <footer class="footer py-3 py-lg-4 py-xl-5">	0.74
Bicos de Confeitar Estrela e Pitanga 50 Itens encontrados Ordenar Bico de Conf... <article id="content" class="page page--categories">	0.02
Bico de Confeitar Pitanga nº 22 - Wilton (normal) <picture data-iesrc="https://ecomsl-nyc3.nyc3.cdn.digitaloceanspaces.com/3967/@v3/1625807543083..." data-alt="Bico de Confeitar Pitanga nº 22 - Wilton (normal)" class="picture product-card__picture loaded" data-loaded="true" style="">	0.00
BarraDoce <div class="col col-lg-auto pl-1 pl-md-2 pl-lg-3">	0.00
<a href="https://www.youtube.com/channel/UCFSp5c9spYYkQdTdxvEePYA" target="_blank" rel="noopener" aria-label="youtube" style="color: #ff0000">	0.00

**Med-Low** **Serve static assets with an efficient cache policy** Potential savings of 122KB

A long cache lifetime can speed up repeat visits to your page.

[Learn how to improve this](#)

URL	CACHE TTL	TRANSFER SIZE
<a href="https://ecom.nyc3.digitaloceanspaces.com/brand/plus/198x43.png">https://ecom.nyc3.digitaloceanspaces.com/brand/plus/198x43.png</a>	none	4.82KB
<a href="https://barradoce.netlify.app/storefront.a2b771bbdf959cf7c487.js">https://barradoce.netlify.app/storefront.a2b771bbdf959cf7c487.js</a>	60 minutes	87.6KB
<a href="https://barradoce.netlify.app/storefront.eda1cbc506ad334347fd.css">https://barradoce.netlify.app/storefront.eda1cbc506ad334347fd.css</a>	60 minutes	35.2KB
<a href="https://www.google-analytics.com/plugins/ua/ec.js">https://www.google-analytics.com/plugins/ua/ec.js</a>	60 minutes	1.30KB
<a href="https://www.google-analytics.com/analytics.js">https://www.google-analytics.com/analytics.js</a>	2 hours	19.6KB
<a href="https://barradoce.netlify.app/assets/payments.png">https://barradoce.netlify.app/assets/payments.png</a>	24 hours	6.15KB
<a href="https://barradoce.netlify.app/chunk.18f579e9165908729a72.js">https://barradoce.netlify.app/chunk.18f579e9165908729a72.js</a>	7 days	4.42KB
<a href="https://barradoce.netlify.app/chunk.2125be60a87bc3b82af5.js">https://barradoce.netlify.app/chunk.2125be60a87bc3b82af5.js</a>	7 days	3.74KB
<a href="https://barradoce.netlify.app/chunk.420ce741a1fa2cd5db4d.js">https://barradoce.netlify.app/chunk.420ce741a1fa2cd5db4d.js</a>	7 days	1.60KB
<a href="https://barradoce.netlify.app/chunk.dfe276ef69e5c0244ca3.js">https://barradoce.netlify.app/chunk.dfe276ef69e5c0244ca3.js</a>	7 days	762B
<a href="https://barradoce.netlify.app/chunk.58621f1413857a28c665.js">https://barradoce.netlify.app/chunk.58621f1413857a28c665.js</a>	7 days	0B
<a href="https://barradoce.netlify.app/chunk.eb82bdee0e426aefe857.js">https://barradoce.netlify.app/chunk.eb82bdee0e426aefe857.js</a>	7 days	0B

**Med-Low** **Reduce unused JavaScript** Potential savings of 61.3KB

Reduce unused JavaScript and defer loading scripts until they are required to decrease bytes consumed by network activity.

[Learn how to improve this](#)

https://barradoce.netlify.app/storefront.a2b771bbdf959cf7c487.js

(unmapped)

TRANSFER SIZE	POTENTIAL SAVINGS
87.6KB	40.3KB
89723	41227

https://www.googletagmanager.com/gtm.js?id=GTM-PDJXWRH

37.3KB 21.1KB

**Low** **Avoid an excessive DOM size** 892 elements

A large DOM will increase memory usage, cause longer style calculations, and produce costly layout reflows.

[Learn how to improve this](#)

STATISTIC	ELEMENT	VALUE
Total DOM Elements		892
Maximum DOM Depth	source <source srcset="https://ecomsl.com/3967/imgs/normal/@v3/1625807439449-2738bc1b120e801c2bd5..." type="image/webp">	19
Maximum Child Elements	Bico de Confeitar Pitanga nº 8B - Wilton R\$ 13,50 Adicionar Bico de Confeitar ... <div class="row">	24

**Low** **Reduce unused CSS** Potential savings of 31.8KB

Reduce unused rules from stylesheets and defer CSS not used for above-the-fold content to decrease bytes consumed by network activity.

[Learn how to improve this](#)

URL	TRANSFER SIZE	POTENTIAL SAVINGS
<ul style="list-style-type: none"> <li>https://barradoce.netlify.app/storefront.eda1cbc506ad334347fd.css</li> </ul>	35.2KB	31.8KB

**Low** **Avoid long main-thread tasks** 3 long tasks found

Lists the longest tasks on the main thread, useful for identifying worst contributors to input delay.

[Learn how to improve this](#)

URL	START TIME	DURATION
https://barradoce.netlify.app/nova/estrela-e-pitanga	853ms	191ms
https://barradoce.netlify.app/chunk.58621f1413857a28c665.js	2.0s	106ms
https://cdn.jsdelivr.net/npm/jquery@3.5.1/dist/jquery.slim.min.js	1.1s	100ms

**Low** **Avoid enormous network payloads** Total size was 308KB

Large network payloads cost users real money and are highly correlated with long load times.

[Learn how to improve this](#)

URL	TRANSFER SIZE
https://barradoce.netlify.app/storefront.a2b771bbdf959cf7c487.js	87.6KB
https://www.googletagmanager.com/gtm.js?id=GTM-PDJXWRH	37.3KB
https://barradoce.netlify.app/storefront.eda1cbc506ad334347fd.css	35.2KB
https://cdn.jsdelivr.net/npm/jquery@3.5.1/dist/jquery.slim.min.js	24.2KB
https://www.google-analytics.com/analytics.js	19.6KB
https://barradoce.netlify.app/chunk.6c65320b10d2bf9ce1d0.js	16.0KB
https://barradoce.netlify.app/icon_192x192.a10011882493fe6b2c1465590b01fdd1.png	15.6KB
https://barradoce.netlify.app/nova/estrela-e-pitanga	9.47KB

- <https://barradoce.netlify.app/chunk.934c4bc750a2af00a9fb.js> 7.72KB
- <https://cdn.jsdelivr.net/npm/popper.js@1.16.1/dist/umd/popper.min.js> 7.69KB

**Low** **Reduce JavaScript execution time** 243ms spent executing JavaScript

Consider reducing the time spent parsing, compiling, and executing JS. You may find delivering smaller JS payloads helps with this. [Learn how to improve this](#)

URL	TOTAL CPU TIME	SCRIPT EVALUATION	SCRIPT PARSE
<a href="https://barradoce.netlify.app/nova/estrela-e-pitanga">https://barradoce.netlify.app/nova/estrela-e-pitanga</a>	359ms	9ms	2ms
<a href="https://barradoce.netlify.app/chunk.58621f1413857a28c665.js">https://barradoce.netlify.app/chunk.58621f1413857a28c665.js</a>	155ms	135ms	0ms
<a href="https://barradoce.netlify.app/storefront.a2b771bbdf959cf7c487.js">https://barradoce.netlify.app/storefront.a2b771bbdf959cf7c487.js</a>	112ms	87ms	5ms
Unattributable	100ms	1ms	0ms

**Low** **Reduce initial server response time** Root document took 106ms

Keep the server response time for the main document short because all other requests depend on it. [Learn how to improve this](#)

URL	TIME SPENT
<a href="https://barradoce.netlify.app/nova/estrela-e-pitanga">https://barradoce.netlify.app/nova/estrela-e-pitanga</a>	106ms

**Low** **Avoid serving legacy JavaScript to modern browsers** Potential savings of 112B

Polyfills and transforms enable legacy browsers to use new JavaScript features. However, many aren't necessary for modern browsers. For your bundled JavaScript, adopt a modern script deployment strategy using module/nomodule feature detection to reduce the amount of code shipped to modern browsers, while retaining support for legacy browsers. [Learn how to improve this](#)

URL	POTENTIAL SAVINGS
<a href="https://cdn.jsdelivr.net/npm/popper.js@1.16.1/dist/umd/popper.min.js">https://cdn.jsdelivr.net/npm/popper.js@1.16.1/dist/umd/popper.min.js</a> Line:3 Column:12570	62B
<a href="https://barradoce.netlify.app/storefront.a2b771bbdf959cf7c487.js">https://barradoce.netlify.app/storefront.a2b771bbdf959cf7c487.js</a> Line:1 Column:250235	50B

**Low** **Defer offscreen images** Potential savings of 10.4KB

Consider lazy-loading offscreen and hidden images after all critical resources have finished loading to lower time to interactive. [Learn how to improve this](#)

URL	RESOURCE SIZE	POTENTIAL SAVINGS
<a href="https://barradoce.netlify.app/assets/payments.png">https://barradoce.netlify.app/assets/payments.png</a>	6.03KB	6.03KB
<a href="https://ecom.nyc3.digitaloceanspaces.com/brand/plus/198x43.png">https://ecom.nyc3.digitaloceanspaces.com/brand/plus/198x43.png</a>	4.36KB	4.36KB

**Low** **Avoid non-composited animations** 1 animated element found

Animations which are not composited can be janky and increase CLS.

ELEMENT

Buscar produtos

```
<div class="d-lg-block col-12 col-lg collapse" id="search-bar" style="">
```

Unsupported CSS Property: height

Low	<b>Avoid chaining critical requests</b>	2 chains found
-----	---	----------------

The Critical Request Chains below show you what resources are loaded with a high priority. Consider reducing the length of chains, reducing the download size of resources, or deferring the download of unnecessary resources to improve page load.

[Learn how to improve this](#)

Maximum critical path latency: **1.1s**

INITIAL NAVIGATION



N/A	<b>Largest Contentful Paint element</b>	1 element found
-----	---	-----------------

This is the largest contentful element painted within the viewport.

ELEMENT

Utilizamos cookies e outras tecnologias semelhantes para melhorar a sua experiê...

```
<div class="text">
```

N/A	<b>Minimize main-thread work</b>	Main-thread busy for 842ms
-----	----------------------------------	----------------------------

Consider reducing the time spent parsing, compiling and executing JS. You may find delivering smaller JS payloads helps with this.

[Learn how to improve this](#)

CATEGORY	TIME SPENT
Script Evaluation	318ms
Style & Layout	227ms
Other	154ms
Rendering	85ms

Parse HTML & CSS	24ms
Script Parsing & Compilation	24ms
Garbage Collection	7ms

N/A **Reduce the impact of third-party code** Total size was 90.1KB

Third-party code can significantly impact load performance. Limit the number of redundant third-party providers and try to load third-party code after your page has primarily finished loading.

[Learn how to improve this](#)

THIRD-PARTY	TRANSFER SIZE
<b>GOOGLE TAG MANAGER</b>	37.3KB
• <a href="https://www.googletagmanager.com/gtm.js?id=GTM-PDJXWRH">https://www.googletagmanager.com/gtm.js?id=GTM-PDJXWRH</a>	37.3KB
<b>JSDELIVR CDN</b>	31.9KB
• <a href="https://cdn.jsdelivr.net/npm/jquery@3.5.1/dist/jquery.slim.min.js">https://cdn.jsdelivr.net/npm/jquery@3.5.1/dist/jquery.slim.min.js</a>	24.2KB
• <a href="https://cdn.jsdelivr.net/npm/popper.js@1.16.1/dist/umd/popper.min.js">https://cdn.jsdelivr.net/npm/popper.js@1.16.1/dist/umd/popper.min.js</a>	7.69KB
<b>GOOGLE ANALYTICS</b>	20.9KB
• <a href="https://www.google-analytics.com/analytics.js">https://www.google-analytics.com/analytics.js</a>	19.6KB

N/A **User Timing marks and measures**

No user timings and/or marks found.

[Learn more](#)